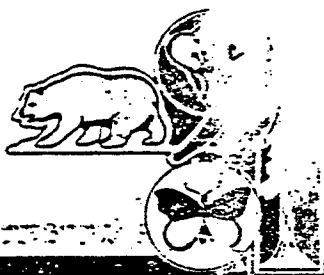


1376659



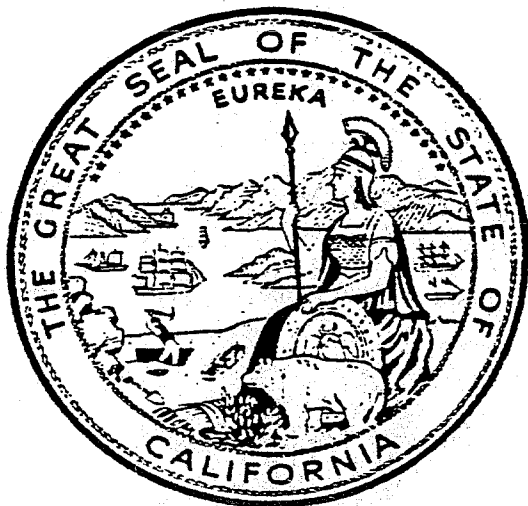
California
OFFICE OF THE SECRETARY OF STATE

I, *MARCH FONG EU*, Secretary of State of the State of California, hereby certify:

That the annexed transcript has been compared with the record on file in this office, of which it purports to be a copy, and that same is full, true and correct.

IN WITNESS WHEREOF, I execute
this certificate and affix the Great
Seal of the State of California this

JUN 9 1936



March Fong Eu

Secretary of State

1570009

ENDORSED
FILED
in the office of the Secretary of State
of the State of California

ARTICLES OF INCORPORATION

OF

JUN 6 - 1986

THE TERRACE AT CANYON HILLS HOMEOWNERS ASSOCIATION

WALTER FONG EU, Secretary of State

ARTICLE I

NAME

The name of this corporation shall be THE TERRACE AT CANYON HILLS HOMEOWNERS ASSOCIATION.

ARTICLE II

PURPOSES

(a) This corporation is a nonprofit mutual benefit corporation organized pursuant to the Nonprofit Mutual Benefit Corporation Law of the State of California. The purpose of this corporation is to engage in any lawful act or activity for which a corporation may be organized under such law.

(b) The specific and primary purpose for which this corporation is formed is to provide community services and facilities or contract for the provision thereof, for the general use, benefit and welfare of the owners of residential condominium units situated within that certain real property in the City of Laguna Beach, County of Orange, California, described as Tract No. 12112, known as THE TERRACES. Notwithstanding any of the above statements of purposes and powers, this corporation shall not, except to an insubstantial degree, engage in any activities or exercise any powers that are not in furtherance of the specific purpose of this corporation. The Association may also

exercise the powers granted to a non-profit mutual benefit corporation as enumerated in Section 7140 of the Corporation's Code. In addition, the Association may exercise the powers granted to the Association by Section 374, the Code of Civil Procedure, and the powers granted to the Association in the Davis-Sterling Common Interest Development Act (Civil Code Section 1350, et seq.).

ARTICLE III

AGENT FOR SERVICE OF PROCESS

The name and address of the initial agent of this corporation for service of process is as follows:

Sandra Ezell
3151 Airway, Suite Q-1
Costa Mesa, CA 92626

ARTICLE IV

DIRECTORS

(a) The names and addresses of the persons who are appointed as first directors of this corporation are as follows:

Sandra Ezell	3151 Airway, Suite Q-1 Costa Mesa, CA 92626
Rita Ringle	3151 Airway, Suite Q-1 Costa Mesa, CA 92626

Holly Elliot

3151 Airway, Suite Q-1
Costa Mesa, CA 92626

Michael J. Ri

3151 Airway, Suite Q-1
Costa Mesa, CA 92626

Charles Kupper

3151 Airway, Suite Q-1
Costa Mesa, CA 92626

(b) Said directors, or any directors selected prior to the first annual election of the members of this corporation, shall act as such only until said first annual election, at which time the continuance of said directors, or any thereof, or the selection of any new director or directors, shall be determined in accordance with the By-Laws.

(c) The number of directors of this corporation shall be set forth in the By-Laws of this corporation, and such number may be changed by amendment to the By-Laws.

ARTICLE V

BY-LAWS

The different classes of membership in the corporation, if any, together with the respective voting and other rights and privileges of the two (2) classes of membership, shall be as set forth in the By-Laws of this corporation. The provisions for the elections and the term of office of the Board of Directors, and for the adoption, approval, and use by this corporation of membership certificates setting forth thereon the rights and privileges of said members, shall also be as set forth in the By-Laws of this corporation.

ARTICLE VI

DISSOLUTION

Upon dissolution of this corporation, the net assets, remaining after satisfaction of all just debts and obligations of the corporation, shall not inure to the benefit of the members of the corporation, but shall be distributed to any other nonprofit corporation organized for purposes similar to this corporation or to a city, county or other public agency with the intent of carrying out the purposes of this corporation.

ARTICLE VII

AMENDMENT OF ARTICLES

Amendment of these Articles shall require the vote or written consent of (i) a majority of the Members of the Board of Directors; and (ii) a majority of the voting power of the corporation; and (iii) a majority of the voting power of members of this corporation other than the Declarant provided, however, if the two-class voting structure is still in effect as provided by the By-Laws of this corporation these Articles may not be amended without the vote or written assent of a majority of each class of membership.

IN WITNESS WHEREOF, for the purpose of forming this corporation, the undersigned, constituting the first directors,

have executed these Articles of Incorporation this 4th day of June, 1986.

London Zell
Rita Singh
Holly Elliott
Nick J. Rill
Charles Kupper

We declare that we are the persons who executed the above Articles of Incorporation, and that this instrument is our act and deed.

London Zell
Rita Singh
Holly Elliott
Nick J. Rill
Charles Kupper

SHEET 2 OF 6 SHEETS
FINAL TRACT OF TENTATIVE
MAP NO 12112
NO OF LOTS: 7 AND LOTS A & B
ACREAGE: 75.999 ACRES
DATE OF SURVEY: JUNE/JULY
1984
SCALE: 1" = 150'

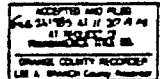
FOR CONDOMINIUM PURPOSES

DUPLICATE

TRACT NO. 12112

CITY OF LAGUNA BEACH, COUNTY OF ORANGE,
STATE OF CALIFORNIA

85-060663



HALL & FOREMAN, INC.

GEORGE D. SHAMBECK, L.S. 3419

\$16.00

EASEMENT NOTES

- 1. INDICATE EASEMENT FOR WATER AND SEWER PURPOSES AND PUBLIC UTILITY PURPOSES DERIVED HEREIN TO THE CITY OF LAGUNA BEACH
- 2. INDICATE EASEMENT FOR EASEMENT ACCESS PURPOSES DERIVED HEREIN TO THE CITY OF LAGUNA BEACH

CLASSIFIED BY STATE 2004 COLLECTIONS

3. LOCATE AND IDENTIFY ALL EASEMENTS THAT THE DISTRICT HAS ON THIS MAP, ALONG AS FOLLOWS:

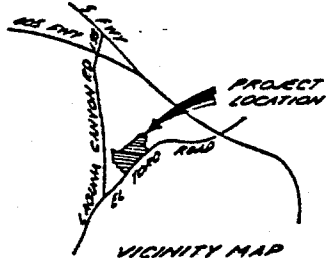
NAME OF PARTY: WANDA L. RICHMOND

DATE OF ORIGINAL RECORD: MAR 2, 1988

TRACT MAP STYLE: ORANGE COUNTY

FILE OF ORIGINAL: JAMES AND, LA

DATE: FEB. 24, 1985 Harry H. Buhl



VICINITY MAP
NOT TO SCALE

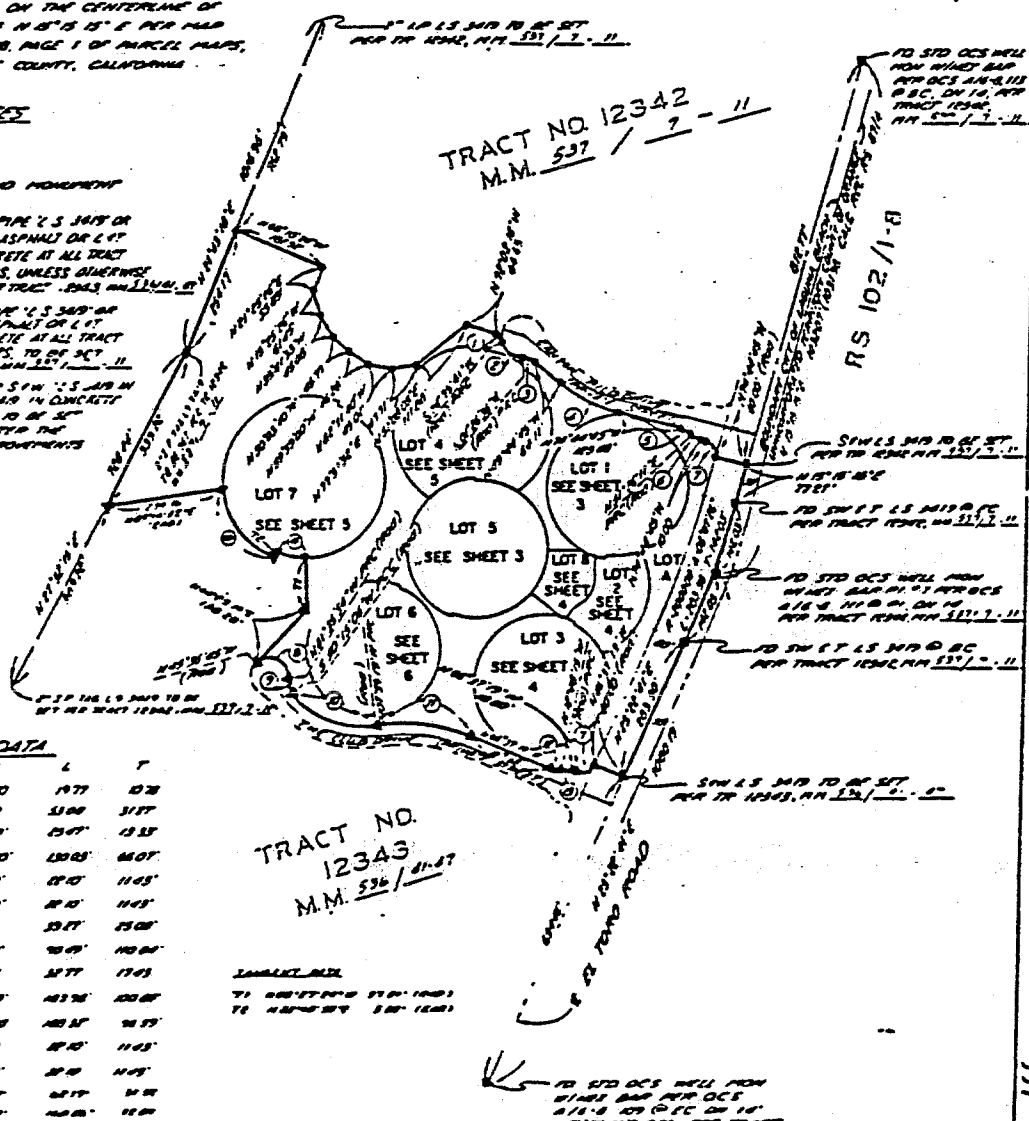
BOUNDARY AND INDEX SHEET

BASIS OF BEARINGS

BEARINGS ARE BASED ON THE CENTERLINE OF LA TORO ROAD BEING N 8° 15' 15" E PER MAP RECORDED IN BOOK 18, PAGE 1 OF PARCEL MAPS, RECORDS OF ORANGE COUNTY, CALIFORNIA.

MONUMENT NOTES

- 1. ■ INDICATES FOUND MONUMENT AS NOTED
- 2. ▲ INDICATES 2" IRON PIPE 2.5 3/8" OR 3.0" 2.5 3/8" IN ASPHALT OR 2" 2.5 3/8" IN CONCRETE AT ALL TRACT BOUNDARY CORNERS, UNLESS OTHERWISE NOTED TO BE SET PER TRACT - ENCL. AND L.S. 3419
- 3. ● INDICATES 2" IRON PIPE 2.5 3/8" OR 3.0" 2.5 3/8" IN ASPHALT OR 2" 2.5 3/8" IN CONCRETE AT ALL TRACT BOUNDARY CORNERS, TO BE SET PER TRACT 12343, M.M. 536 / 2-87
- 4. ○ 2" 2.5 3/8" OR 3.0" 2.5 3/8" IN ASPHALT OR 2" 2.5 3/8" IN CONCRETE AT ALL LOT CORNERS, TO BE SET WITHIN 30 DAYS AFTER THE ACCEPTANCE OF IMPROVEMENTS



NO	A	B	C	T
1	34° 37' 57"	20.00	19.71	12.28
2	28° 02' 17"	40.00	31.88	31.37
3	41° 41' 24"	35.00	23.47	13.33
4	25° 00' 00"	250.00	120.83	64.07
5	34° 40' 24"	35.00	27.47	11.03
6	34° 40' 24"	35.00	27.47	11.03
7	50° 00' 00"	25.00	15.47	15.00
8	104° 00' 34"	34.80	20.47	10.84
9	48° 09' 00"	35.00	27.77	17.03
10	35° 41' 27"	40.00	31.38	12.28
11	3° 27' 00"	344.00	163.27	86.37
12	31° 40' 24"	35.00	27.47	11.03
13	31° 40' 24"	35.00	27.47	11.03
14	27° 00' 00"	150.00	62.17	34.00
15	42° 27' 00"	150.00	62.17	34.00

TRACT NO. 12343
M.M. 536 / 2-87

ENCLOSURE
71 00000000 00000000
71 00000000 00000000

SHEET 3 OF 6 SHEETS
FINAL TRACT OF TENTATIVE
MAP NO. 12112
NO. OF LOTS: 7 AND LOTS A & B
ACREAGE: 73.777 ACRES
DATE OF SURVEY: JUNE/JULY
1984
SCALE: 1" = 40'

FOR CONDOMINIUM PURPOSES
TRACT NO. 12112
CITY OF LAGUNA BEACH, COUNTY OF ORANGE,
STATE OF CALIFORNIA

85-060663
ACCEPTED AND FILED
FEB 21 1985 AT 11:00 AM
BY CLERK OF SUPERIOR COURT
ORANGE COUNTY RECORDER
LIFE & SPANISH COUNTY RECORDS

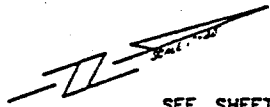
HALL & FOREMAN, INC. GEORGE D. SHAMBECK, L.S. 3419

\$16.00

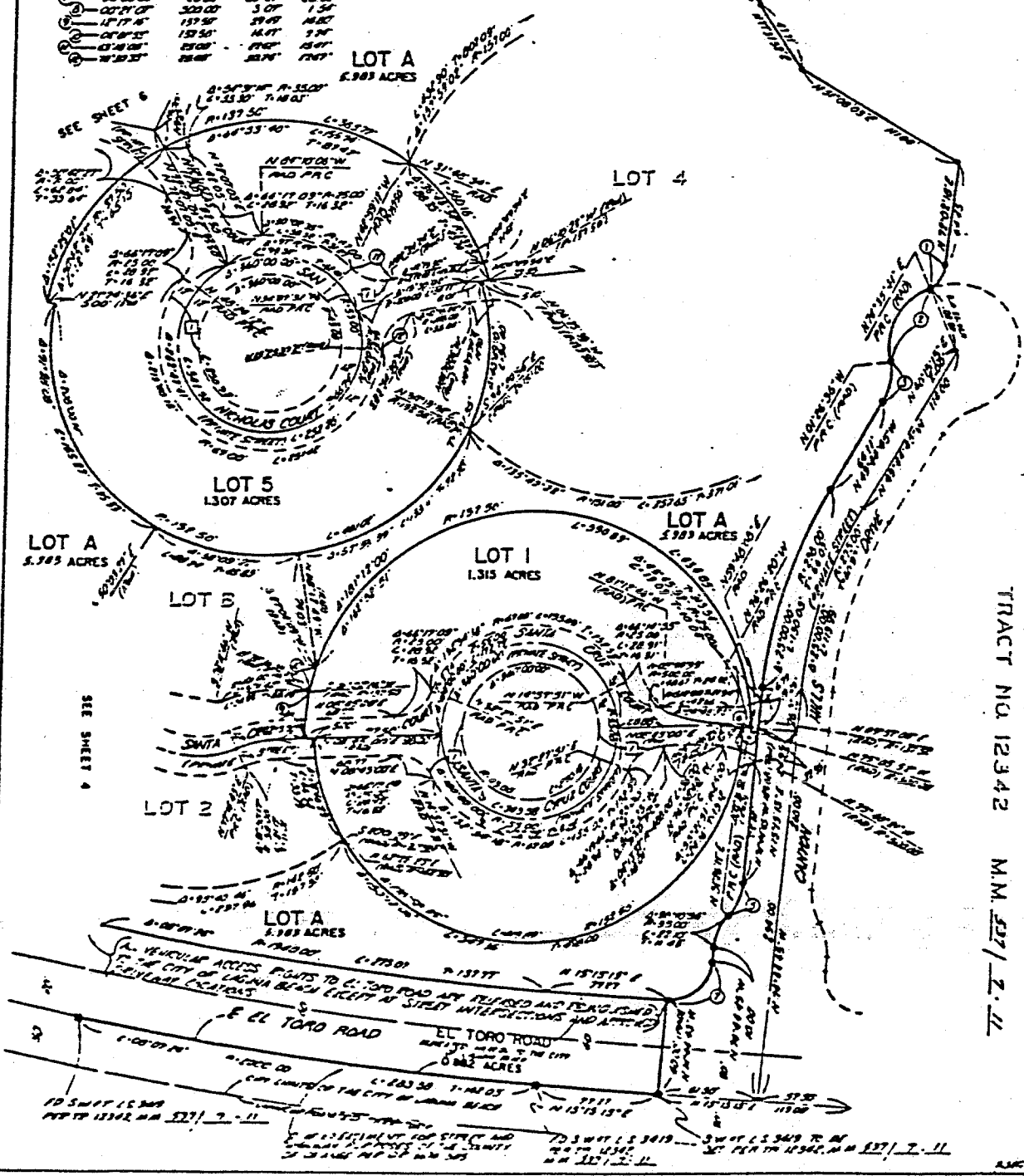
NOTE: SEE SHEET 2 FOR EASEMENT NOTES, MONUMENT
NOTES & BASIS OF BEARINGS.
LOT A SHOWS HEREON IS FOR OPEN SPACE PURPOSES.

Curve Data

Station	Chord	Angle	Radius
1+00.00	11.77	42.28	15.00
2+00.00	23.00	31.87	30.00
3+00.00	33.00	23.53	45.00
4+00.00	42.10	17.43	60.00
5+00.00	50.00	12.50	75.00
6+00.00	56.42	8.75	90.00
7+00.00	61.50	5.71	105.00
8+00.00	65.25	3.21	120.00
9+00.00	67.67	1.88	135.00
10+00.00	68.80	1.10	150.00
11+00.00	68.60	0.63	165.00
12+00.00	67.10	0.31	180.00



SEE SHEET 5



TRACT NO. 12112 M.M. 577 / Z. 11

SHEET 4 OF 6 SHEETS
 FINAL TRACT OF TENTATIVE
 MAP NO. 12112
 NO. OF LOTS: 7 AND LOTS A & B
 ACREAGE: 75.799 ACRES
 DATE OF SURVEY: JUNE/JULY
 1984
 SCALE: 1" = 40'

FOR CONDOMINIUM PURPOSES

TRACT NO. 12112

CITY OF LAGUNA BEACH, COUNTY OF ORANGE,
 STATE OF CALIFORNIA

85-060663

RECORDED AND FILED
 7/13/85 AT 10:30 A.M.
 BY DEPUTY CLERK OF
 SUPERIOR COURT OF
 ORANGE COUNTY RECORDER
 LEE A. BRANCH COUNTY RECORDER

HALL & FOREMAN, INC.

GEORGE D. SHAMBECK, L.S. 3419

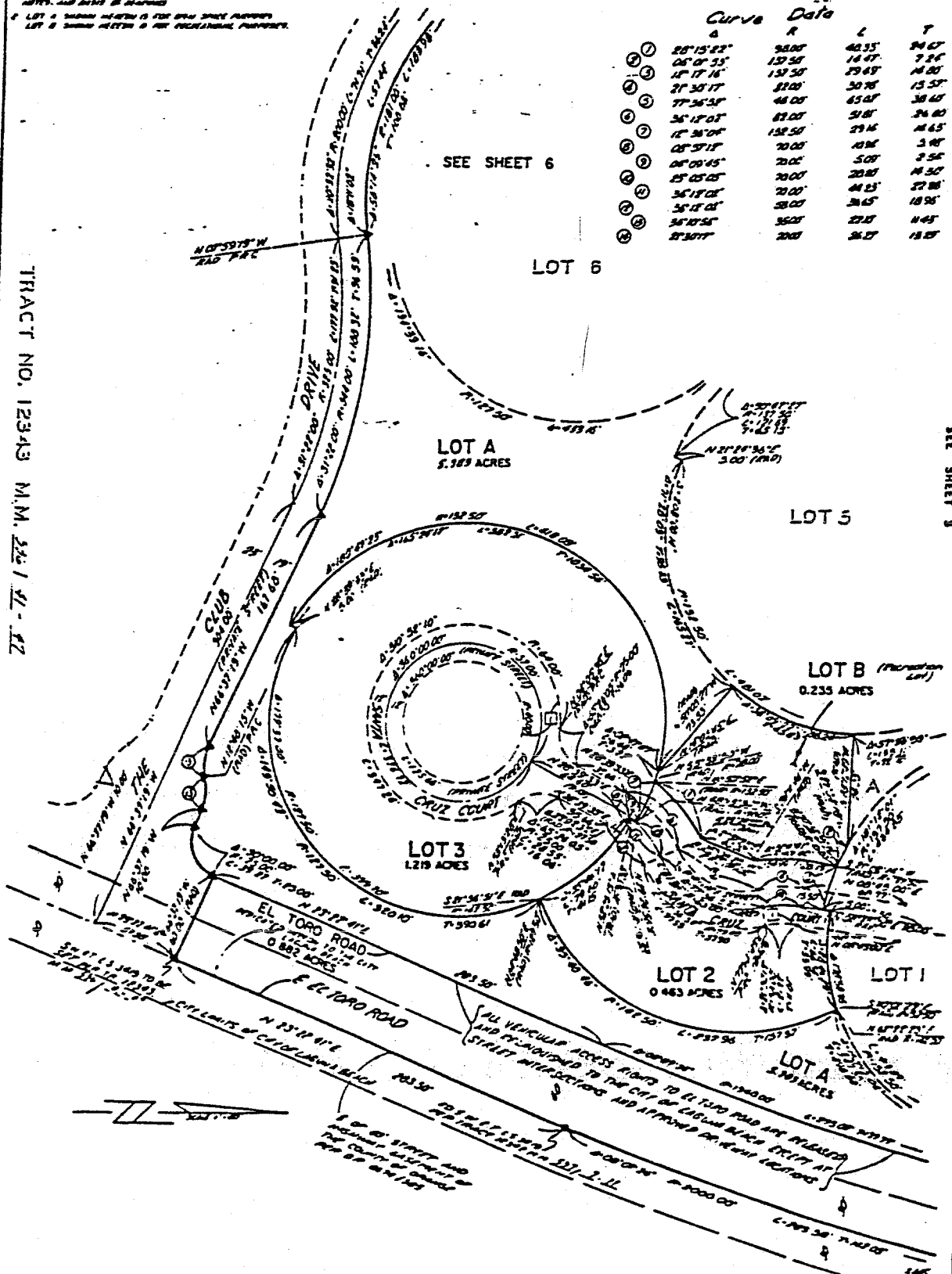
\$16.00

NOTES:

- 1. SEE SHEET 3 FOR (PARTIAL) UTILITY AGREEMENT NOTES AND NOTES ON ENCUMBRANCES.
- 2. LOT A SHOWN HEREON IS FOR OPEN SPACE PURPOSES. LOT B SHOWN HEREON IS FOR RECREATIONAL PURPOSES.

Curve Data

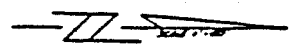
Station	Angle	R	L	T
1	20°15'22"	98.00	40.55	24.67
2	05°07'35"	137.50	16.47	7.26
3	15°17'16"	137.50	29.69	14.80
4	21°30'17"	82.00	30.78	15.57
5	17°25'58"	44.00	65.07	38.40
6	26°17'05"	82.00	51.87	24.80
7	12°36'08"	152.50	29.14	14.45
8	02°57'18"	70.00	10.94	5.48
9	08°09'45"	70.00	5.00	2.56
10	25°05'05"	70.00	20.80	14.50
11	26°17'05"	70.00	44.25	27.88
12	26°17'05"	38.00	26.45	18.58
13	26°17'55"	35.00	27.87	14.45
14	27°30'17"	20.00	24.27	18.27



TRACT NO. 12343 M.M. 2861-11-12

SEE SHEET 6

SEE SHEET 3



SHEET 5 OF 6 SHEETS
 FINAL TRACT OF TENTATIVE
 MAP NO 12112
 NO. OF LOTS: 7 AND LOTS A & B
 ACREAGE: 75.999 ACRES
 DATE OF SURVEY: JUNE/JULY
 1964

FOR CONDOMINIUM PURPOSES **DUPLICATE**
TRACT NO. 12112
 CITY OF LAGUNA BEACH, COUNTY OF ORANGE,
 STATE OF CALIFORNIA

85-060663

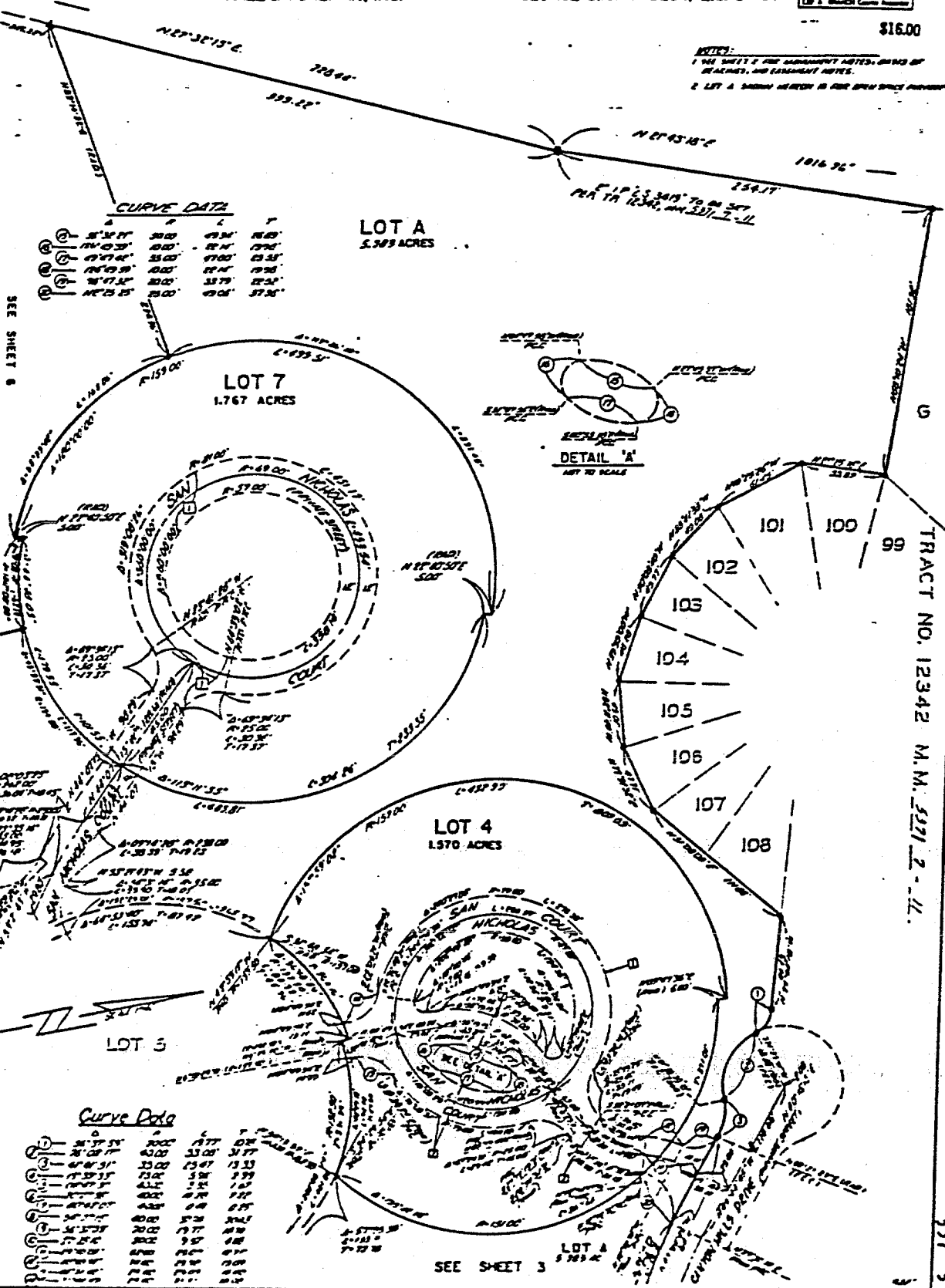
ACCEPTED AND FILED
 FEBRUARY 27 1964 A.M.
 AT 10:05 A.M.
 IN OFFICE OF
 THE COUNTY CLERK
 OF ORANGE COUNTY
 LIP & BRANCH COUNTY RECORDS

\$16.00

HALL & FOREMAN, INC.

GEORGE D. SHAMBECK, L.S. 3419

NOTES:
 1. SEE SHEET 4 FOR ADDITIONAL NOTES, DIMENSIONS OF
 BOUNDARIES, AND ELEVATION NOTES.
 2. LOT A SHOWN HEREON IS FOR OPEN SPACE PURPOSES.



CURVE DATA

Station	Bearing	Distance	Chord	Angle
1	S 1/2° 11'	30.00	0.93'	180°
2	N 0° 03'	00.00	0.00'	179°
3	S 77° 14'	35.00	17.00'	133°
4	N 6° 09'	00.00	0.00'	179°
5	S 77° 13'	30.00	15.79'	133°
6	N 72° 25'	15.00	0.00'	173°

LOT A
5.343 ACRES

LOT 7
1.767 ACRES

LOT 4
1.570 ACRES

LOT 5

Curve Data

Station	Bearing	Distance	Chord	Angle
1	S 1/2° 11'	30.00	0.93'	180°
2	N 0° 03'	00.00	0.00'	179°
3	S 77° 14'	35.00	17.00'	133°
4	N 6° 09'	00.00	0.00'	179°
5	S 77° 13'	30.00	15.79'	133°
6	N 72° 25'	15.00	0.00'	173°

SEE SHEET 3

TRACT NO. 12342 M.M. 5271 2-11.

SHEET 6 OF 6 SHEETS
 FINAL TRACT OF TENTATIVE
 MAP NO. 12112
 NO. OF LOTS: 7 AND LOTS A & B
 ACREAGE: 19.993 ACRES
 DATE OF SURVEY: JUNE/JULY
 1984
 SCALE: 1" = 40'

FOR CONDOMINIUM PURPOSES DUPLICATE
TRACT NO. 12112
 CITY OF LAGUNA BEACH, COUNTY OF ORANGE,
 STATE OF CALIFORNIA

85-060663

ACCEPTED AND FILED
 FEB. 21, 1985 AT 11:25 AM AM
 AT THE OFFICE OF
 THE CLERK OF THE SUPERIOR COURT
 OF ORANGE COUNTY, CALIFORNIA
 L.H. & B. COUNTY RECORDER

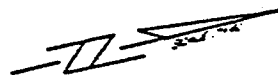
16-00

HALL & FOREMAN, INC.

GEORGE D. SHAMBECK, L.S. 3419

Curve Data

A	R	L	T
①	45° 02' 00"	39.00'	32.77' 17.63
②	05° 11' 26"	181.00'	100.6' 5.0'
③	05° 15' 04"	181.00'	10.17' 50.0'
④	05° 17' 18"	250.00'	40.32' 20.2'
⑤	37° 45' 23"	4.20'	57.2' 19.4'
⑥	37° 21' 51"	47.50'	17.0' 0.0'
⑦	05° 15' 45"	44.00'	7.00' 5.50'
⑧	27° 51' 02"	44.00'	30.7' 15.6'
⑨	05° 19' 02"	44.00'	10.3' 5.8'
⑩	05° 15' 04"	44.00'	10.1' 5.0'
⑪	15° 02' 17"	174.00'	81.0'

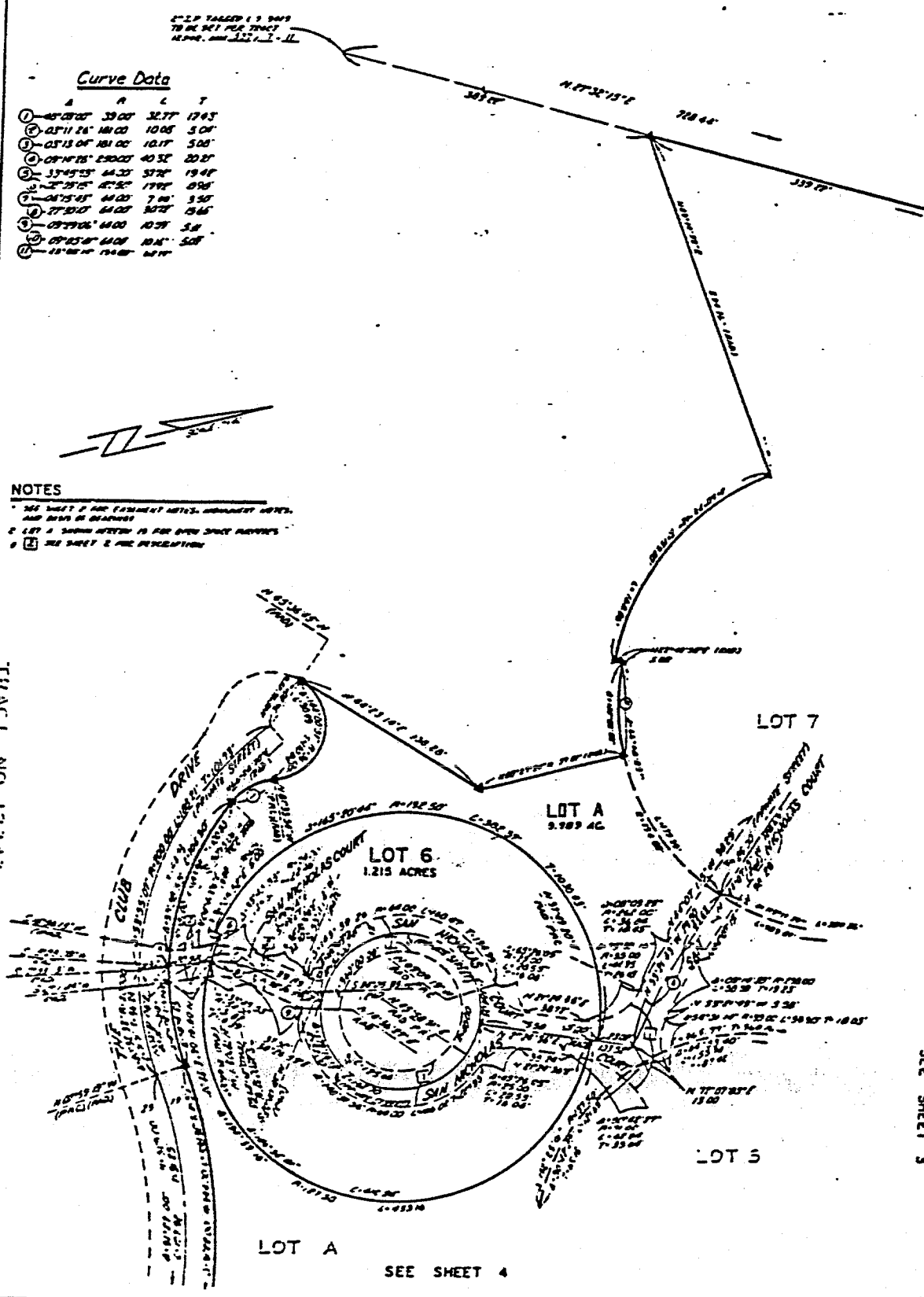


NOTES

- 1. SEE SHEET 2 FOR EASEMENT NOTES, EASEMENT NOTES, AND DATA ON EASEMENTS
- 2. LOT 7 A SHOWN HEREIN IS FOR OPEN SPACE PURPOSES
- 3. SEE SHEET 2 FOR DESCRIPTION

TRACT NO. 12343

MAP NO. 12112



SEE SHEET 3

SEE SHEET 3

SEE SHEET 4